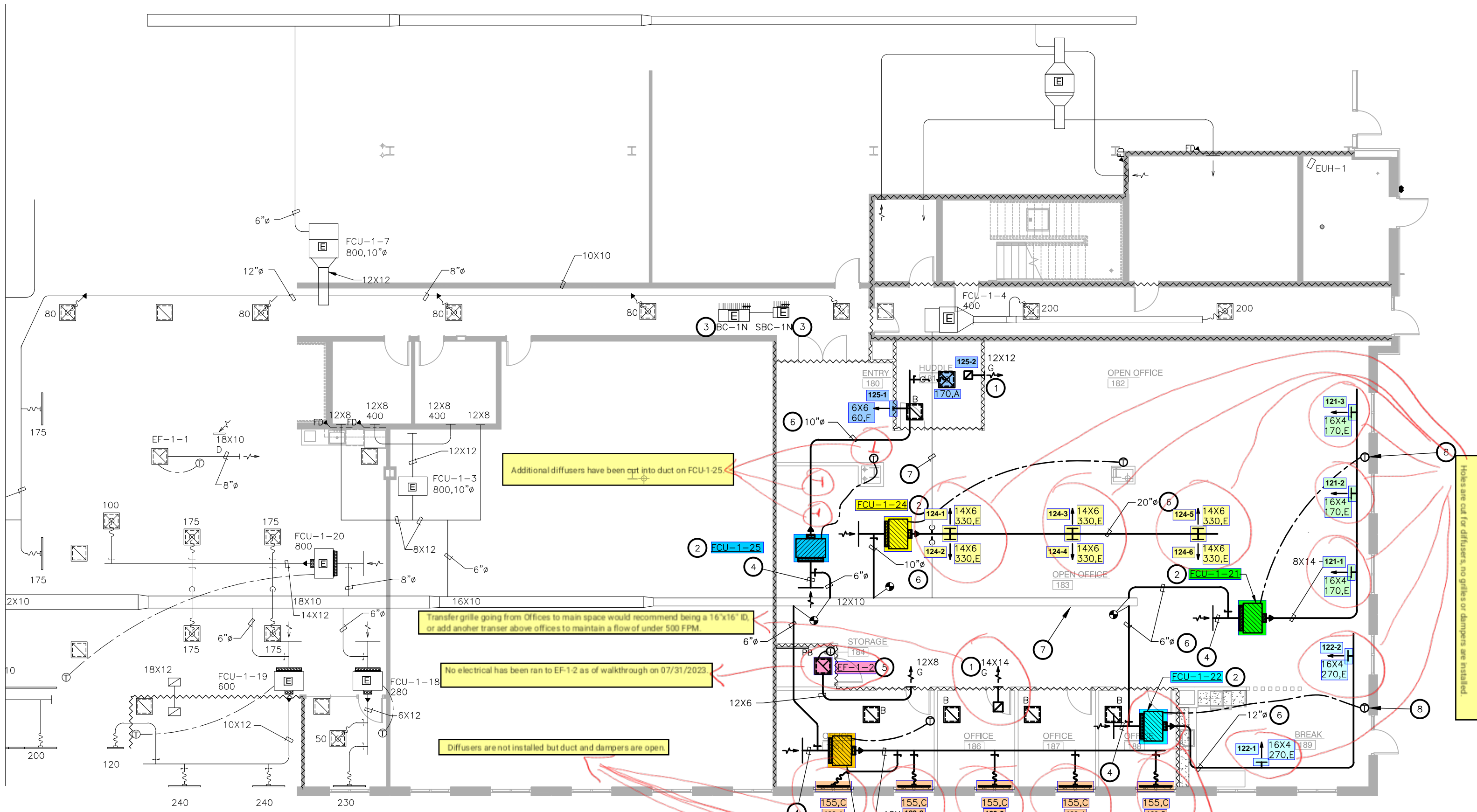


Asset Walk 6-9 weeks

Project:3501 Spec Suite 180

Date of Walk-Thru	7/31/2023
AHU/RTU	
RA & OA damper installed	Done in Shell.
Piping complete	Done in Shell.
Ductwork Connections Finalized and Sealed to Unit (OA, Return, Relief, Supply)	Done in Shell.
Power Landed to Unit/VFD	Done in Shell.
Comments	
Exhaust Fans	
Unit Mounted to Correct Curb/Location	Yes.
Disconnect Available	Yes.
Power to Fans/VFD	No. No electrical has been ran to the fan yet.
Duct connected to fan/curb	Yes.
Motorized Dampers Installed	N/A
Comments	
Fan Coils/Small Inline AHU/HP/WSHP	
Unit Mounted in correct Location/Configuration	All yes except FCU-1-22. Appears to have been taken out. See Plans
Power to Unit	Yes.
Supply & Return Duct Installed	Yes.
Outside air Duct Installed	Yes.
Comments	See plans for info on missing FCU.
Return Air Path (marked up drawing attached)	
Are there enough transfer openings	No. Offices on East wall need more square ft of transfer space.
Are they sized correctly	Yes, according to plan sizes.
Are they in the correct location	Yes.
Comments	See plans for recommendation of office transfer grilles.
VAVs	
VAV Hanging & Present	None.
Inlet Duct connected	None.
Discharge Duct connected	None.
Unit Powered & Operational	None.
Piping to reheat coil complete	None.
Balance dampers installed and open	None.
Comments	



775
570 FPM
1.36

① LEVEL 01 MECHANICAL PLAN

FCU-1-22 appears to have been taken out and duct from FCU-1-23 continues to serve FCU-1-22 area.